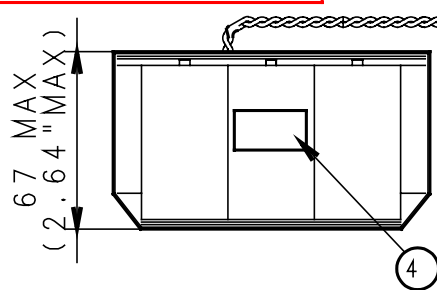
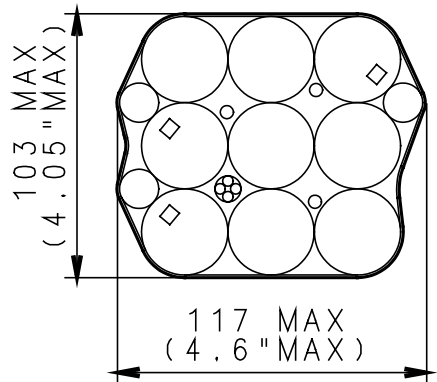


WARNING!
ALL THE INFORMATION CONTAINED IN THIS DOCUMENT OR DISCLOSED BY IT IS THE PROPERTY OF TADIRAN BATTERIES LTD. AND MAY NOT BE USED WITHOUT ITS WRITTEN AUTHORIZATION.

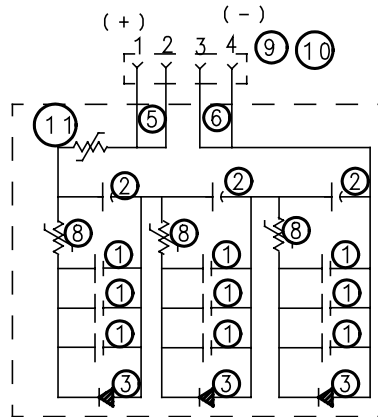
REV	DESCRIPTION	CHNGD SHEET	E.C.N	DATE	DRAWN	CHECKED



UPRIGHT POSITION



HORIZONTAL POSITION



NOTES

BATTERY SHOULD BE MOUNTED IN THE APPLICATION IN UPRIGHT OR HORIZONTAL POSITION.

TECHNICAL DATA @25 °C :

- 1) OPEN CIRCUIT VOLTAGE: 10.89V TO 11.16V.
- 2) CLOSE CIRCUIT VOLTAGE (@0.5A @0.1 SEC): 10.32V TO 10.65V.
- 3) CAPACITY TO 9V (@0.5 A @5% DUTY CYCLE): 57 Ah.
- 4) MAXIMUM 1 SECOND PULSE TO 9V: 3A.
- 5) MAXIMUM PULSE LENGTH @0.5 A TO 8.4V: 1000 SEC.
- 6) OPERATING TEMPERATURE: -40 °C TO +85 °C.
- 7) WEIGHT MAX.: 980 g

11		POLY-SWITCH (P.T.C.)	RACHEM SRP 200	PC	1	
10		CONNECTOR TERMINAL	MOLEX 50079-8000	PC	4	
9		CONNECTOR HOUSING	MOLEX 51021-0400	PC	1	
8		POLY-SWITCH (P.T.C.)	RACHEM SRP 120	PC	3	
7		EXTERNAL SLEEVE	SHRINKABLE PVC	MT	A/R	
6		WIRE, BLACK	26AWG (7X34AWG)	MT	A/R	UL-1007
5		WIRE, RED	PVC OR PTFE JACKET	MT	A/R	
4		LABEL		PC	1	
3		DIODE	"SCHOTTKY" VSK 540	PC	3	
2		HLC-1550		PC	3	
1		TL-5930		PC	9	

NO.	PART NO.	NAME	DESCRIPTION	U/M	QTY	NOTES
UNLESS OTHERWISE SPECIFIED:			PROCESSING LEVEL			
ALL DIMENSIONS ARE IN MM.			OPERATION		CATALOG NO.	
TOLERANCES:						
LINEAR :						
ANGLES :						
ROUGHNESS:						
PROD/PROJ: -			DRAWN		SHEET / OF	
			DESIGNED		1 / 1	
			CHECKED			
			APPROVED			
SCALE: --						